

ABBEVILLE GENERAL HOSPITAL

"PROVIDING ACCESS TO QUALITY CARE CLOSE TO HOME"



Performance Overview 2015 - 2016



Board of Commissioners



**Robert LeBlanc
John Boudreaux,
Corbett LeBouef, MD
Anita Levy**

**Daleon Primeaux
Oswald Broussard
Jody Landry**

Abbeville General Announces Restructuring of Management

Ray Landry, MS, FACHE, Fellow of the American College of Healthcare Executives, and **Chief Executive Officer** of Hospital Service District #2, Parish of Vermilion, Abbeville General Hospital, recently announced a management level restructuring to better position the hospital service district in a new health care delivery system model. Landry, a native of Abbeville, has 38 years of hospital administration experience, 23 of which are at Abbeville General. Landry is a 1974 graduate of Abbeville High School, 1978 graduate of USL, and in 1992 received a Master of Science in Healthcare Science Administration from College of St Francis, Joliet, Illinois. He is a graduate of Leadership Vermilion Class 1.

Landry announced the following appointments as a result of the restructure:

Troy Hair, BS, Chief Financial Officer, native of Gueydan, has 21 years of hospital and nursing home financial management experience, 18 of which are at Abbeville General. Hair is a 1988 graduate of Gueydan High School, and a 1994 graduate of Louisiana Tech University.

Chuck Guidry, RN, BSN, Chief Operating Officer, native of Kaplan, has 18 years of nursing and hospital management experience in the emergency room setting. Guidry is a 1991 graduate of Kaplan High School and 1997 graduate of USL. He is a graduate of Leadership Vermilion Class 2. Chuck is currently enrolled in the LSU MBA program with completion in the fall of 2016.

Heidi Broussard, RN, BSN, CIC, Infection Control Practitioner, Chief Nursing Officer, a native of Maurice, has 21 years of nursing and management experience. Heidi was recently certified in the area of Infection Control by the Association of Practitioners in Infection Control. Broussard is a 1990 graduate of North Vermilion High School and 1995 of USL. Currently, she is a member of Leadership Vermilion Class 3. Effective March 28, 2016, Broussard was promoted to the position of Chief Nursing Officer.

Brittany Thibodeaux, RN, BSN, Chief Quality and Patient Safety Officer, native of Erath, has 8 years of clinical nursing experience in the surgical area. Thibodeaux is currently studying to become a green belt in Lean Six Sigma performance management theory. Thibodeaux is a 2002 graduate of Erath High School and 2007 McNeese State University College. She is a graduate of Leadership Vermilion Class 2. Effective April 4, 2016, Thibodeaux was promoted to Chief Quality and Patient Safety Officer.

Weston Miller, M.D., Chief Medical Officer, practices as a general surgeon in the community and as Chief Medical Advisor to the hospital. Miller served as Chief of Staff in 1983 and has been on Medical Staff of Abbeville General since 1978.

Heidi Broussard, RN,BSN, CIC
Chief Nursing Officer



Ray Landry, MS, FACHE
Chief Executive Officer

C-Suite

Brittany Thibodeaux, RN, BSN
**Chief Quality and
Patient Safety Officer**



Troy Hair, BS
Chief Financial Officer



Weston Miller, M.D.
Chief Medical Officer

Chuck Guidry, RN,BSN
Chief Operating Officer



ABBEVILLE GENERAL HOSPITAL
STATEMENTS OF REVENUES, EXPENSES AND CHANGES IN NET POSITION
YEARS ENDED DECEMBER 31,

	<u>2015</u>	<u>2014</u>	<u>2013</u>
Revenues			
Net patient service revenues (Note 9)	\$ 33,367,903	\$ 31,402,133	\$ 26,816,521
Sales taxes	2,903,237	2,981,333	3,089,222
Grants	7,192,376	2,789,534	6,519,111
Other operating revenues	<u>425,792</u>	<u>385,664</u>	<u>424,672</u>
Total Revenues	<u>43,889,308</u>	<u>37,558,664</u>	<u>36,849,526</u>
Expenses			
Salaries	19,489,170	19,463,743	18,077,538
Benefits and payroll taxes	3,871,227	3,521,910	3,172,815
Supplies and drugs	4,199,506	3,926,106	3,525,764
Professional fees	3,102,635	2,673,861	2,633,461
Other expenses	6,198,823	6,593,285	6,290,044
Insurance	1,050,108	1,097,277	938,736
Depreciation and amortization	<u>1,907,073</u>	<u>1,958,313</u>	<u>1,760,567</u>
Total Expenses	<u>39,818,542</u>	<u>39,234,495</u>	<u>36,398,925</u>
Operating Income (Loss)	<u>4,070,766</u>	<u>(1,675,831)</u>	<u>450,601</u>
Nonoperating Revenues (Expenses)			
Interest income	9,300	6,484	7,425
Interest income from limited use assets	6,601	7,814	10,191
Interest expense	(130,572)	(107,785)	(100,892)
Gain (loss) on sale of capital asset	-0-	(34,290)	-0-
Capital grants	<u>195,080</u>	<u>39,860</u>	<u>443,686</u>
Changes in Net Position	4,151,175	(1,763,748)	811,011
Beginning Net Position	<u>22,611,981</u>	<u>24,375,729</u>	<u>23,564,718</u>
Ending Net Position	\$ <u>26,763,156</u>	\$ <u>22,611,981</u>	\$ <u>24,375,729</u>

Audited Statement of Revenues and Expenses FY 2015

STRATEGIC MAP FOR STRATEGIC EFFECTIVENESS

Central Challenge
Remain Relevant and Competitive in a
Changing Healthcare Delivery System

Strategic Priority #1

Community Health Needs Assessment
to address Population Health in a
Clinically Integrated Network Model

TACTICS

Medical Staff Development Plan

- › General Surgeon
- › Psychiatrist

Plan and Design New Services or Enhanced Services

- › ICU Intensivist via Telemed Link
- › Wound Care
- › Urgent Care

Clinically Integrated Network

- › Physician Alignment
- › Cross-Continuum Partnerships
- › Employee Health Insurance Plan

Strategic Priority #2

Promote a Culture of
Continuous Improvement

TACTICS

Value Based Total Performance Scores
Above State/National/Benchmarks

JC/DHH/CMS/Leapfrog Standards Compliance

- › Continuous Readiness

Standards of Behavior

- Full Implementation of ACCEPT

Evidence Based Best Practices Supported by
Information Systems & Technology hospital-wide

Strategic Priority #3

Maintain and Grow a Viable Patient Population Base
with Adequate Reimbursement Systems

TACTICS

Sales Tax Planning for Improvement (PFI)

- › Inpatient Unit Renovation
- › Ambulatory Surgery Center
- › Medical Office Building
→ Outpatient Diagnostic

Marketing Plan - Perception

Revenue Enhancement



"Access to Quality Care Close to Home"

Updated: 06/29/16



First Whooping Crane Born in LA since 1939



Abbeville General is much like the whooping crane by offering *Access to Quality Care Close to Home* to the residents in Vermilion Parish. The dedication and commitment of Abbeville General's staff for their patients and that of the caretakers of the rare whooping crane will ensure that quality care is taken to keep both Patients and ***Whooping Cranes Close to Home!***

Hospital Report Card

Page 1 of 5

Report Run Date: 03/11/2016

Hospital Value-Based Purchasing – Value-Based Percentage Payment Summary Report
Percentage Summary Report
Provider: 190034
Reporting Period: Fiscal Year 2016

Data As Of: 02/05/2016

Total Performance Score

Clinical Process of Care Domain

Patient Experience of Care Domain

Outcome Domain

Efficiency Domain

Facility	State	National
44.583333333333	41.479354772212	40.479955798765
Unweighted Domain Score	Weighting	Weighted Domain Score
63.333333333333	10%	6.333333333333
81.000000000000	25%	20.250000000000
45.000000000000	40%	18.000000000000
0.000000000000	25%	0.000000000000

Value-Based Percentage Payment
Summary - Fiscal Year 2016

Base Operating DRG Payment Amount Reduction	Value-Based Incentive Payment Percentages	Net Change in Base Operating DRG Payment Amount	Value-Based Incentive Payment Adjustment Factor	Exchange Function Slope
1.750000000000%	2.1636169115%	+0.4136169115%	1.0041361691	2.7731271496

Calculated values were subject to rounding.

Reference the Hospital Value-Based Purchasing page on QualityNet for report information, calculations, and Hospital VBP resources.

Patient Satisfaction Overall Score

Inpatient Services

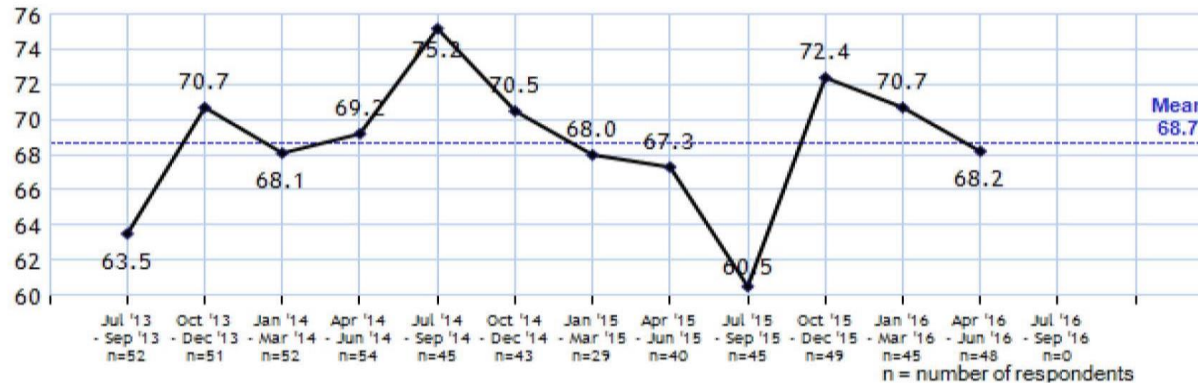


Top Box Trends

Inpatient

Abbeville General Hospital

Overall



Abbeville General Hospital

Displayed by Discharge Date

© 2010 Press Ganey Associates, Inc.

Patient Satisfaction Score

Emergency Services

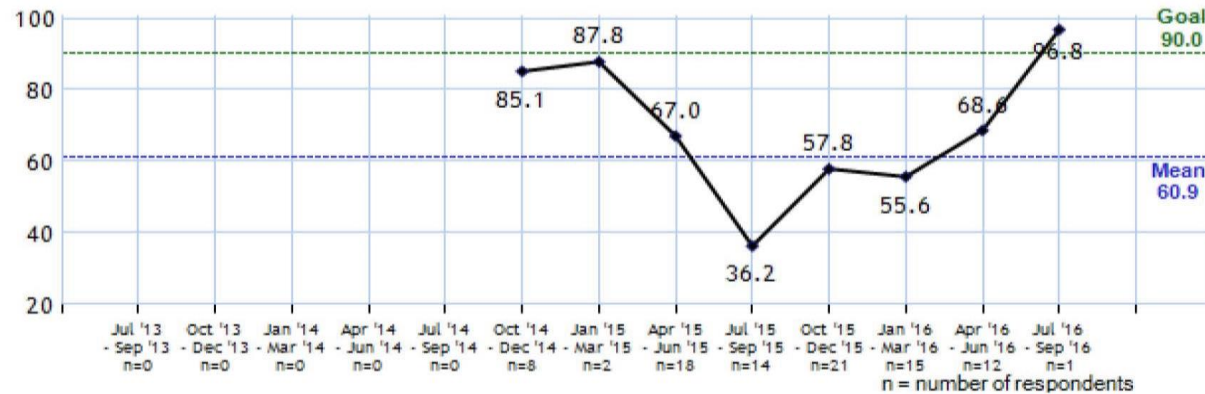


Top Box Trends

Emergency Department

Abbeville General Hospital

Overall



Abbeville General Hospital



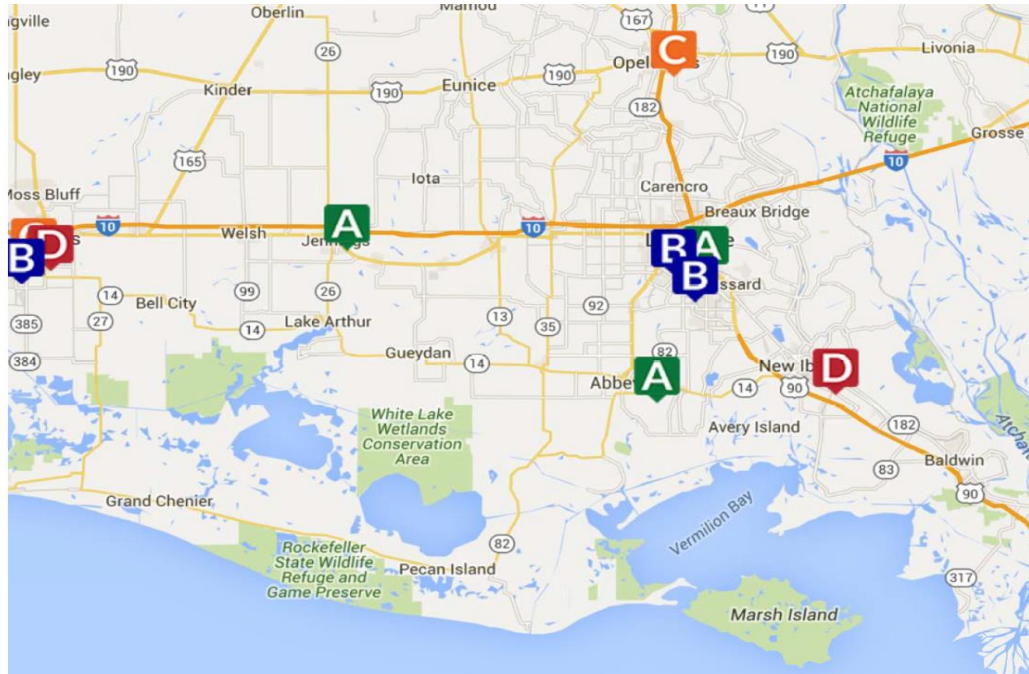
Displayed by Visit Date

© 2010 Press Ganey Associates, Inc.

Leapfrog Grade

Abbeville General Hospital

118 North Hospital Drive
Abbeville, LA 70510-4077



This Hospital's Grade

A

Spring 2016

Hospital Accreditation Award Letter



January 28, 2016

Ray Landry, FACHE
Chief Executive Officer
Abbeville General Hospital Service District
#2
118 North Hospital Drive
Abbeville, LA 70510

Joint Commission ID #: 8690
Program: Hospital Accreditation
Accreditation Activity: 60-day Evidence of
Standards Compliance
Accreditation Activity Completed: 01/27/2016

Dear Mr. Landry:

The Joint Commission would like to thank your organization for participating in the accreditation process. This process is designed to help your organization continuously provide safe, high-quality care, treatment, and services by identifying opportunities for improvement in your processes and helping you follow through on and implement these improvements. We encourage you to use the accreditation process as a continuous standards compliance and operational improvement tool.

The Joint Commission is granting your organization an accreditation decision of Accredited for all services surveyed under the applicable manual(s) noted below:

- [Comprehensive Accreditation Manual for Hospitals](#)

This accreditation cycle is effective beginning November 14, 2015. The Joint Commission reserves the right to shorten or lengthen the duration of the cycle; however, the certificate and cycle are customarily valid for up to 36 months.

Please visit [Quality Check®](#) on The Joint Commission web site for updated information related to your accreditation decision.

We encourage you to share this accreditation decision with your organization's appropriate staff, leadership, and governing body. You may also want to inform the Centers for Medicare and Medicaid Services (CMS), state or regional regulatory services, and the public you serve of your organization's accreditation decision.

Please be assured that The Joint Commission will keep the report confidential, except as required by law. To ensure that The Joint Commission's information about your organization is always accurate and current, our policy requires that you inform us of any changes in the name or ownership of your organization or the health care services you provide.

Sincerely,

Mark G. Pelletier, RN, MS
Chief Operating Officer
Division of Accreditation and Certification Operations

Primary Care Medical Home (PCMH) Accreditation Award Letter



November 14, 2015

Ray Landry, FACHE
Chief Executive Officer
Abbeville General Hospital Service District
#2
118 North Hospital Drive
Abbeville, LA 70510

Joint Commission ID #: 8690
Primary Care Medical Home
Accreditation Activity: Unannounced Full
Event
Certification Expiration Date: 11/14/2018

Dear Mr. Landry:

The Joint Commission would like to thank your organization for participating in the accreditation process. This process is designed to help your organization continuously provide safe, high-quality care, treatment, and services by identifying opportunities for improvement in your processes and helping you follow through on and implement these improvements. We encourage you to use the accreditation process as a continuous standards compliance and operational improvement tool.

With that goal in mind, your organization received Requirement(s) for Improvement during its recent survey. These requirements have been summarized in the Accreditation Report provided by the survey team that visited your organization.

Please be assured that The Joint Commission will keep the report confidential, except as required by law. To ensure that The Joint Commission's information about your organization is always accurate and current, our policy requires that you inform us of any changes in the name or ownership of your organization or the health care services you provide.

Please visit [Quality Check®](#) on The Joint Commission web site for updated information related to your accreditation decision.

Sincerely,

A handwritten signature in black ink that reads 'Mark Pelletier'.

Mark G. Pelletier, RN, MS

Chief Operating Officer

Division of Accreditation and Certification Operations

THE JOINT COMMISSION
Recognizes

**Abbeville General Hospital Service District #2
Abbeville, LA**



Surgical Care

as a
**Top Performer on
Key Quality Measures®**

2014



Mark R. Chassin, MD, MPP, MPH
President and Chief Executive Officer

David W. Baker, MD, MPH, FACP
Executive Vice President
Healthcare Quality Evaluation

HCO#9690



CONFIDENTIAL: EMBARGOED UNTIL TUESDAY, NOV. 17, 2015
Do not publicize or promote before this date

October 30, 2015

Abbeville General Hospital Service District #2
Abbeville, LA
HCO ID# 8690

Dear Mr. Ray Landry:

Congratulations! Your hospital is being recognized by The Joint Commission as a *Top Performer on Key Quality Measures®* for 2015 (using 2014 data). The *Top Performer* hospitals will be formally announced on Tuesday, Nov. 17. **We ask that you keep this information confidential until that date.**

This achievement demonstrates your hospital's commitment to assuring that evidence-based interventions are delivered in the right way and at the right time – because it's the right thing to do for your patients. Specifically, your hospital is being recognized for one or more performance measure set(s), which will be noted on your hospital's *Top Performer* certificate of recognition.

As a *Top Performer*, your hospital will be recognized in the *America's Hospitals: Improving Quality and Safety* annual report, on The Joint Commission website, and on The Joint Commission's Quality Check® website.

Download your hospital's *Top Performer* information

Information for promoting your achievement is available for easy download from your hospital's Joint Commission Connect extranet under the *Top Performer* section, including:

- Certificate of recognition
- Graphics files for the Gold Key icon
- Publicity kit with press release template
- Communication guidelines
- Brochure

Be sure to share this information with your communications or public relations staff.

Beginning Nov. 17, please share your hospital's achievement with your staff, community and local media. The Joint Commission will announce *Top Performer* hospitals to national, trade and consumer media (including regional outlets) on Nov. 17 during a telephone press conference. After that date, a replay of the press conference will be available at the [Top Performer Web page](http://www.jointcommission.org/top_performers.aspx) on The Joint Commission website at http://www.jointcommission.org/accreditation/top_performers.aspx.

If you have any questions about the *Top Performer* program, please send an email to topperformersprogram@jointcommission.org. Media questions can be sent to toppublicitykit@jointcommission.org.

Again, congratulations on being a *Top Performer on Key Quality Measures®* for 2015!

Sincerely,

Mark R. Chassin, MD, FACP, MPP, MPH
President and Chief Executive Officer
The Joint Commission

Abbeville General Received The Joint Commission Top Performer Award For 2014

The Joint Commission's Top Performer on Key Quality Measures® for 2014

The checkmark (✓) indicates the measure set(s) for which the hospital or critical access hospital is being recognized.
The list reflects *Top Performer* hospitals accredited by The Joint Commission as of Sept. 1, 2015.

Hospitals by State	City	Heart Attack	Heart Failure	Pneumonia	Surgical Care	Children's Asthma	VTE	Stroke	Hosp-Based Inpt Psych	Immunization	Perinatal Care	Tobacco Treatment	Substance Use
Louisiana													
Abbeville General Hospital Service District #2	Abbeville				✓								
Compass Behavioral Center of Alexandria	Alexandria							✓					
Oceans Behavioral Hospital of Alexandria	Alexandria							✓					
Rapides Regional Medical Center	Alexandria	✓	✓	✓	✓					✓	✓		
Baton Rouge Behavioral Hospital	Baton Rouge							✓					
Woman's Hospital	Baton Rouge				✓						✓		
Oceans Behavioral Hospital of Lafayette, LLC	Broussard							✓					
Lakeview Regional Medical Center	Covington	✓	✓	✓	✓			✓			✓		
Oceans Behavioral Hospital of DeRidder, LLC	DeRidder							✓					
Our Lady of the Lake Ascension Community Hospital, Inc.	Gonzales		✓	✓	✓		✓						
Terrebonne General Medical Center	Houma	✓	✓	✓	✓		✓				✓		
Jennings American Legion Hospital	Jennings			✓	✓						✓		
Oceans Behavioral Hospital of Greater New Orleans	Kenner							✓					
Lafayette General Medical Center, Inc.	Lafayette	✓	✓	✓	✓			✓			✓		
The Regional Medical Center of Acadiana	Lafayette	✓	✓		✓		✓				✓		
Women & Children's Hospital, LLC	Lake Charles				✓					✓	✓		
Jefferson Parish Hospital Service District Number 1	Marrero	✓	✓	✓	✓		✓				✓		
East Jefferson General Hospital	Metairie	✓	✓	✓	✓			✓			✓		
Iberia General Hospital and Medical Center	New Iberia	✓	✓	✓	✓		✓	✓					



American College of Radiology

Magnetic Resonance Imaging Services of
Abbeville General Off-Site Imaging Center

2621 N Drive
Suite D
Abbeville, Louisiana 70510

were surveyed by the
Committee on MRI Accreditation of the
Commission on Quality and Safety

The following magnet was approved

General Electric LX SHORTBORE 2000

For

Head, Spine, Body, MSK, MRA

Accredited from:

June 08, 2016 through June 08, 2019

CHAIRMAN, COMMITTEE ON MRI ACCREDITATION

PRESIDENT, AMERICAN COLLEGE OF RADIOLOGY

MRAP# 05338-01

**Abbeville General
Off-site Imaging
Center
Received Three Year
Accreditation For
Magnetic Resonance
Imaging (MRI)
Services**

Abbeville General Earns Quality Respiratory Care Recognition



ABBEVILLE GENERAL RECEIVED THE LHA TRUST FUNDS SAFETY STAR

This award is for our patient safety initiative, "Improving Compliance with Stroke Measures." Our staff was commended for their leadership in developing a comprehensive plan that significantly reduced risk to our patients.

*Congratulations
Abbeville General!*





BOBBY JINDAL
GOVERNOR

State of Louisiana
Governor's Office of Homeland Security
and
Emergency Preparedness

KEVIN DAVIS
DIRECTOR

April 8, 2015

RECEIVED
ADMINISTRATION

BY: AK
DATE: 4/13/15

Mr. Ray Landry
Chief Executive Officer
Abbeville General Hospital
118 North Hospital Drive
Abbeville, LA 70510

RE: Approval and Funding – Phase I
Abbeville General Hospital Safe Room
HMGP #1786-113-0006, FEMA-1786-DR-LA, Project #0160

Dear Mr. Landry:

On behalf of Governor Bobby Jindal, I am pleased to inform you that Phase I of your application for Federal assistance under the Hazard Mitigation Grant Program was approved by FEMA on April 3, 2015 (see enclosure) for the above referenced project.

Approved Phase I costs include:

- Design (basic A/E services)
- Appraisal
- Cost of Land
- Pre-Award Costs
- Grant Management

Please note the approved Phase I costs are for the specified activities listed only. No brick and mortar or ground disturbing work may commence before approval of Phase II funding. Once the data have been obtained from Phase I, FEMA will continue with your Phase II review.

**Abbeville General
Received
FEMA Grant Award
to Construct a
Safe Room /
New 16 Bed
Psychiatric Unit**

Mr. Ray Landry
Page 2
April 8, 2015

The approved funding for eligible project activities is as follows:

Federal Share (75%)	\$372,330.00
Non- Federal Share (25%)	\$124,110.00
TOTAL PROJECT AWARD	\$496,440.00

A Sub-grantee Agreement briefing is required for this grant award. The following information will be explained to you and members of your staff:

- Project Performance Period of 12 months (Phase I)
- Reporting requirements
- Procurement process
- Process for requesting reimbursement of funds
- Sub-grantee Agreement review
- Phase I Deliverables

The Hazard Mitigation Grant Program requires a 25% non-federal cost share match. This non-federal cost share may include state or local funds, in-kind services, or a combination of all of these. The State will reimburse Abbeville General Hospital the approved Federal Share that is expended on eligible activities.

Harry St. Pierre, your State Applicant Liaison for this project, will be contacting you to schedule this briefing. If you have any questions, please contact him at 225-267-2819 or harry.st.pierre@la.gov.

Sincerely,



Casey Tingle
Assistant Deputy Director
Hazard Mitigation

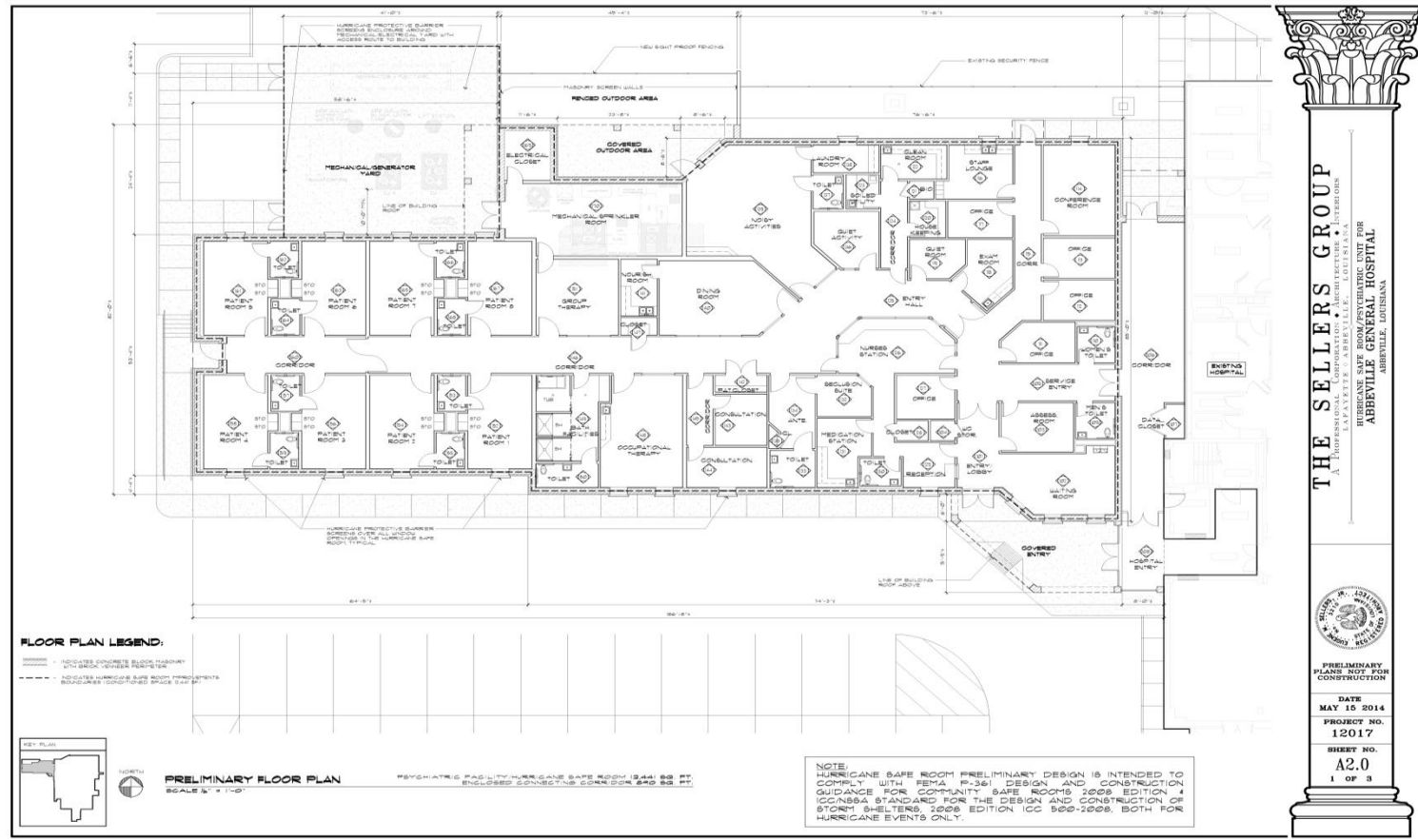
CT:hs

Enc. FEMA Approval Letter April 3, 2015
Sub-Grantee Agreement (2)

**Abbeville General
Received
FEMA Grant Award
to Construct a
Safe Room /
New 16 Bed
Psychiatric Unit**

Floor Plan for Safe Room / New 16 Bed Psychiatric Unit

Estimated Cost - \$6,591,440.00



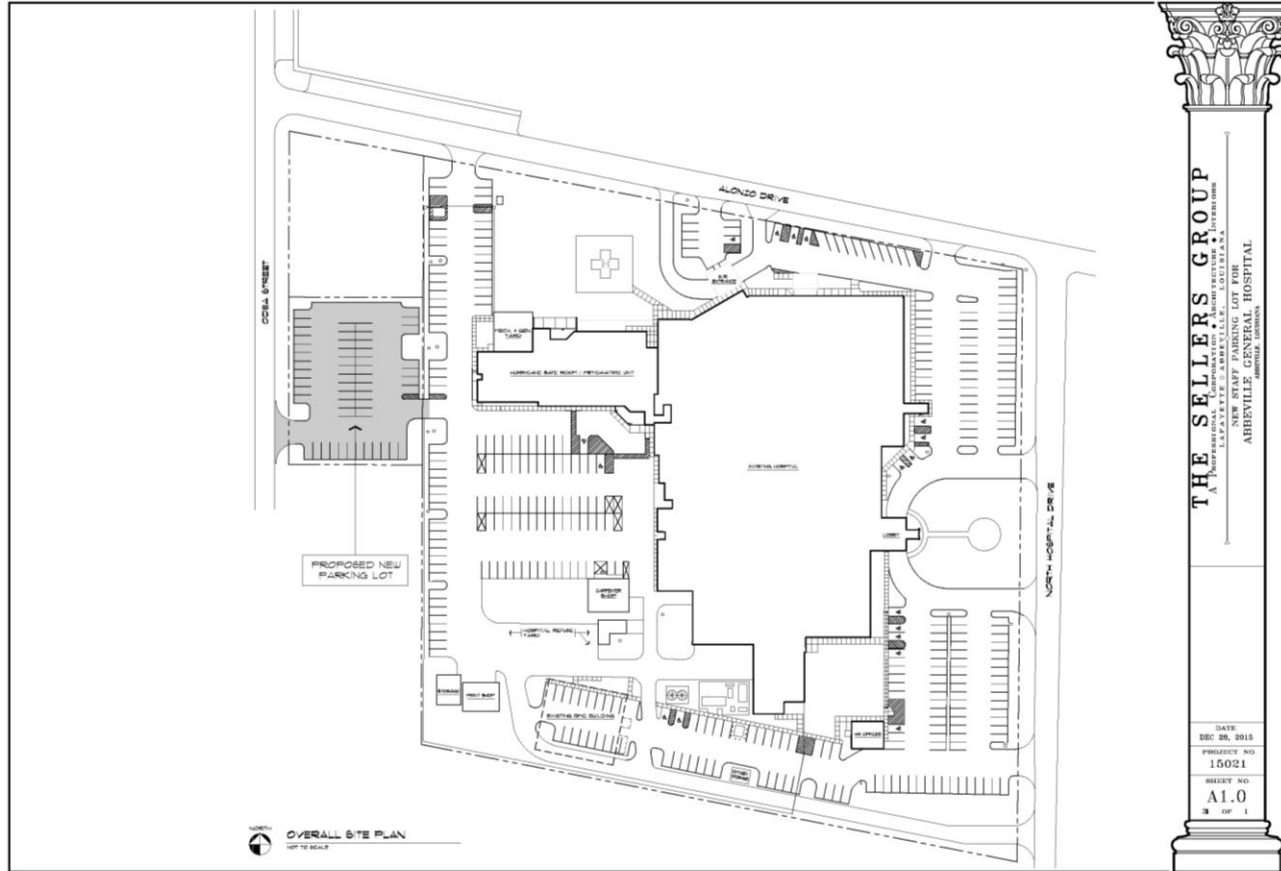
Building Maintenance & Equipment

Cooling Tower Replacement Project - \$ 445,076.00



Building Maintenance & Equipment

New Employee Parking Lot - \$ 213,092.00



Cardiopulmonary Services

Arterial Blood Gas Analyzer - \$ 29,598.00



Food and Nutrition Services

Abbey Café
Remodel Project
\$ 71,855.00



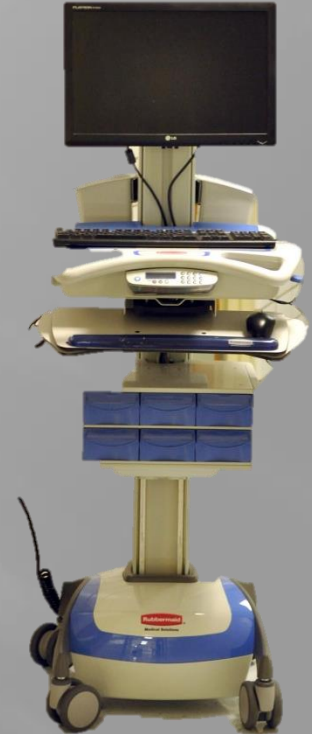
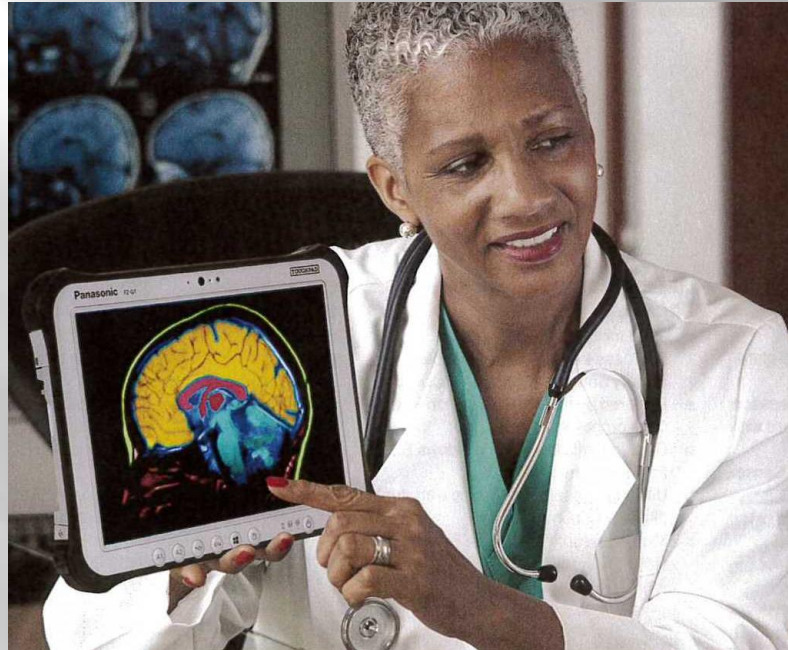
Cerner Partnership for New Health Information System



Top Row: Neal Hebert, IT Director; Chuck Guidry, COO; Nathan Ross, Cerner Sales Leader; Kelly T. Hair, IS Director; Brittany Thibodeaux, CQO. Bottom Row: Troy Hair, CFO; Ray Landry, CEO; Nevin Folino, Cerner Client Executive

New Health Information System

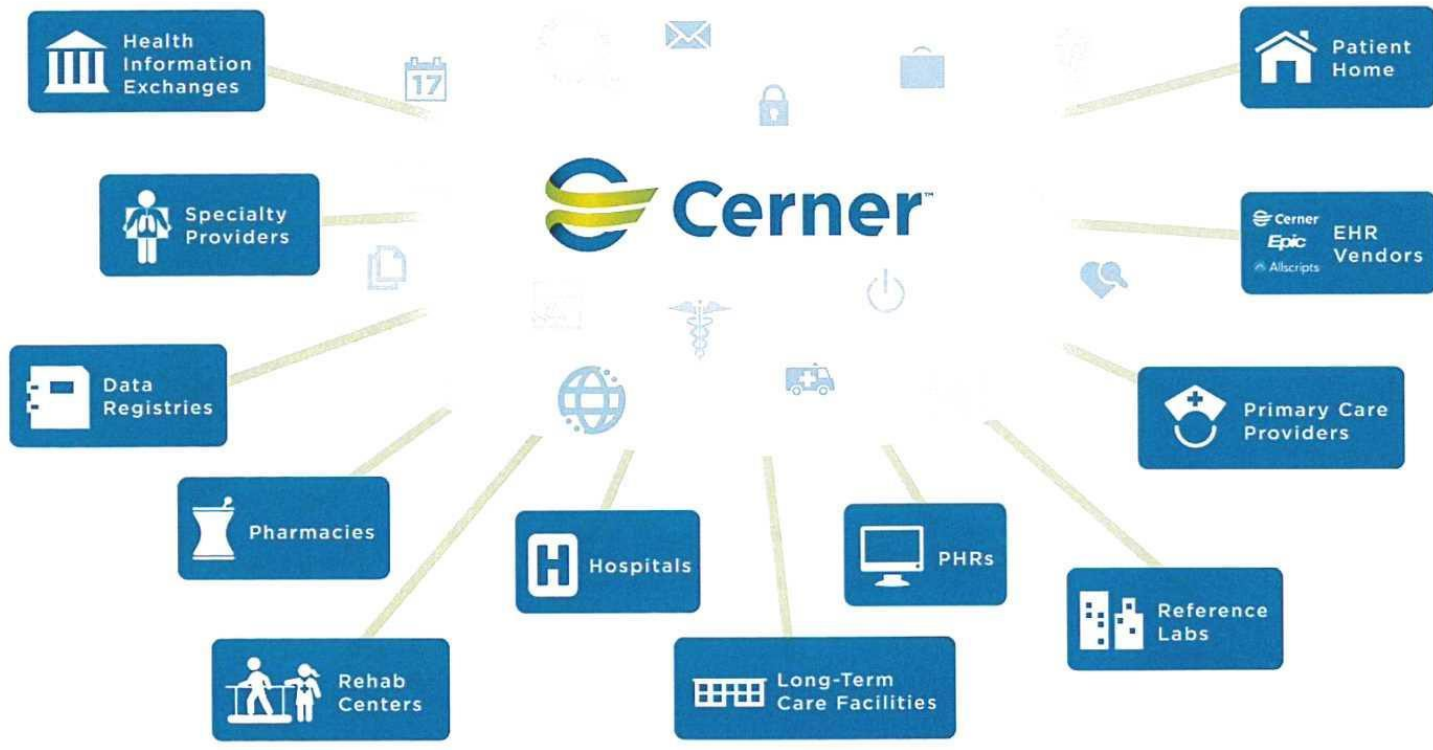
Cerner Partnership - \$3,300,000.00



New Health Information System

Cerner Partnership - \$3,300,000.00

Gain quick access to critical information.



Surgical Services

High Definition Endoscopic Video Processor - \$ 114,398.00



Surgical Services

Hydraulic Surgical Table - \$ 45,095.61



Surgical Services

Orthopedic Drill System - \$ 55,876.81





Capital Improvements

July 2015 – June 2016

Building Maintenance & Equipment	\$865,707.00
----------------------------------	--------------

- | | |
|-------------------------------------------------|--------------|
| ✓ Cooling Tower Replacement Project----- | \$334,800.00 |
| ✓ Cooling Tower Piping----- | \$110,276.00 |
| ✓ Water Shut-off Valve Replacement Project----- | \$ 37,500.00 |
| ✓ LED Logo Signage----- | \$ 30,958.00 |

Information Technology

Hardware & Software Purchases	\$ 213,059.00
-------------------------------	---------------

Diagnostic & Surgical
Equipment Purchases

\$ 143,849.00

Infusion Therapy Center

(Cancer Center of Acadiana @ Abbeville General)

Start-Up Cost \$97,854



Sleep Center @ Abbeville General



Dr. Shauna Bienvenu - Family Medicine

Abbeville General Hospital Clinic



Family Medicine Hospital Rounding

Dr. Lan Minh Pham



Dr. Claude Meeks



Dr. Melisa Harrington
Internal Medicine/Nephrology
Maurice Community Care Clinic



Obstetrics / Gynecology

Women's Health of Vermilion

Dr. Gilbert Pellerin, Jr.



Dr. Mandy Boudreaux



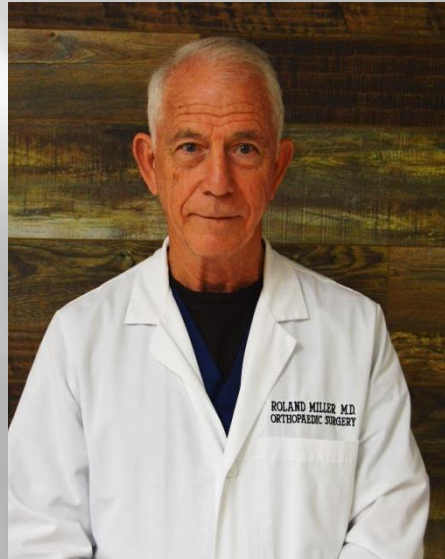
Orthopedic Services

24 Hour Availability

Dr. Kyle Caswell



Dr. Roland Miller



Dr. Seth Rosenzweig



AGH Rural Health Clinics

Patient-Centered Medical Home



Abbeville General Hospital Clinic
2419 Alonzo St., Abbeville
Building A – Family Practice
Building B – Women's Health of Vermilion
Building C – Pediatric/Specialty

Maurice Community Care Clinic
207 Milton Rd., Maurice



Future Erath-Delcambre Community Care Clinic

Construction/Equipment Cost - \$1,501,428.00



220 North Rd., Erath
Patient-Centered Medical Home

Emergency Department Addition/Renovation Project Construction/Equipment Cost-\$3,416,745



Emergency Department Ambulance Entrance

